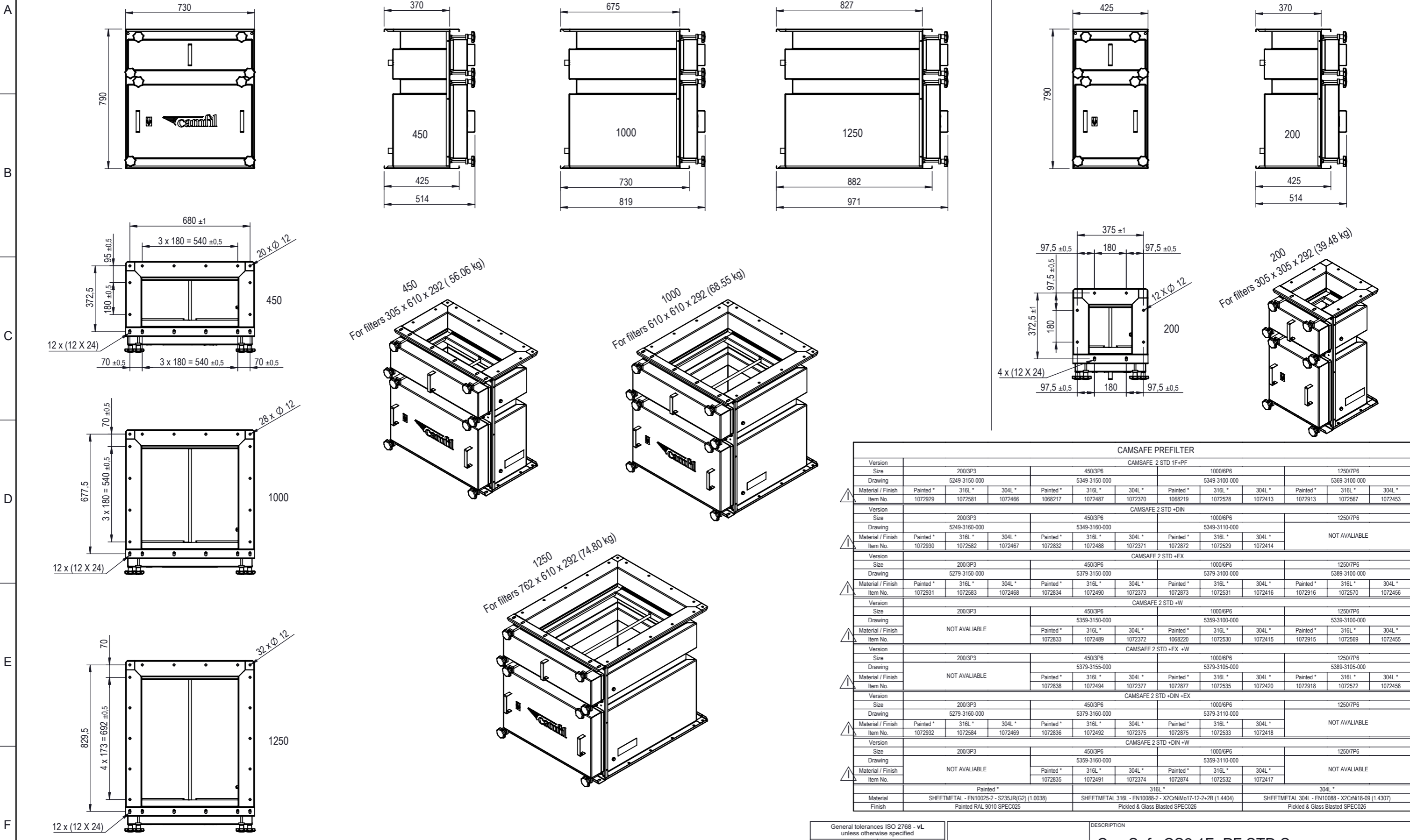


REV.	CHANGE	DATE	DESIGNED	APPROVED
I	ITEM NUMBERS CHANGED	19.08.2021	RIL	VPA



CAMSAFE PREFILTER												
CAMSAFE 2 STD 1F+PF												
Version	200/3P3			450/3P6			1000/6P6			1250/7P6		
Size	5249-3150-000			5349-3150-000			5349-3100-000			5369-3100-000		
Drawing	Painted * 316L * 304L *			Painted * 316L * 304L *			Painted * 316L * 304L *			Painted * 316L * 304L *		
Material / Finish	1072929 1072581 1072466			1068217 1072487			1068219 1072528 1072413			1072913 1072567 1072453		
Item No.												
CAMSAFE 2 STD +DIN												
Version	200/3P3			450/3P6			1000/6P6			1250/7P6		
Size	5249-3150-000			5349-3150-000			5349-3100-000			5369-3100-000		
Drawing	Painted * 316L * 304L *			Painted * 316L * 304L *			Painted * 316L * 304L *			NOT AVAILABLE		
Material / Finish	1072930 1072582 1072467			1072832 1072488 1072371			1072872 1072529 1072414					
Item No.												
CAMSAFE 2 STD +EX												
Version	200/3P3			450/3P6			1000/6P6			1250/7P6		
Size	5279-3150-000			5379-3150-000			5379-3105-000			5389-3105-000		
Drawing	Painted * 316L * 304L *			Painted * 316L * 304L *			Painted * 316L * 304L *			Painted * 316L * 304L *		
Material / Finish	1072931 1072583 1072468			1072834 1072490 1072373			1072873 1072531 1072416			1072916 1072570 1072456		
Item No.												
CAMSAFE 2 STD +W												
Version	200/3P3			450/3P6			1000/6P6			1250/7P6		
Size	5359-3150-000			5379-3155-000			5359-3100-000			5339-3100-000		
Drawing	NOT AVAILABLE			Painted * 316L * 304L *			Painted * 316L * 304L *			Painted * 316L * 304L *		
Material / Finish				1072833 1072489 1072372			1068220 1072530 1072415			1072915 1072569 1072455		
Item No.												
CAMSAFE 2 STD +EX +W												
Version	200/3P3			450/3P6			1000/6P6			1250/7P6		
Size	5279-3150-000			5379-3155-000			5379-3105-000			5389-3105-000		
Drawing	NOT AVAILABLE			Painted * 316L * 304L *			Painted * 316L * 304L *			Painted * 316L * 304L *		
Material / Finish				1072838 1072494 1072377			1072877 1072535 1072420			1072918 1072572 1072458		
Item No.												
CAMSAFE 2 STD +DIN +EX												
Version	200/3P3			450/3P6			1000/6P6			1250/7P6		
Size	5279-3160-000			5379-3160-000			5379-3110-000			5369-3110-000		
Drawing	Painted * 316L * 304L *			Painted * 316L * 304L *			Painted * 316L * 304L *			NOT AVAILABLE		
Material / Finish	1072932 1072584 1072469			1072836 1072492 1072375			1072875 1072533 1072418					
Item No.												
CAMSAFE 2 STD +DIN +W												
Version	200/3P3			450/3P6			1000/6P6			1250/7P6		
Size	5359-3160-000			5379-3160-000			5359-3110-000			5339-3110-000		
Drawing	NOT AVAILABLE			Painted * 316L * 304L *			Painted * 316L * 304L *			NOT AVAILABLE		
Material / Finish				1072835 1072491 1072374			1072874 1072532 1072417					
Item No.												
Material	Painted * SHEETMETAL - EN10025-2 - S235JR(G2) (1.0038)			316L * SHEETMETAL 316L - EN10088-2 - X2CrNiMo17-12-2-2B (1.4404)			304L * SHEETMETAL 304L - EN10088 - X2CrNi18-09 (1.4307)					
Finish	Painted RAL 9010 SPEC025			Pickled & Glass Blasted SPEC026			Pickled & Glass Blasted SPEC026					

NB: The copyright of this drawing remains with Camfil. Contents must not be used, copied or disclosed to third parties without prior written consent. All rights reserved.

General tolerances ISO 2768 - vL unless otherwise specified	
DIMENSION	TOLERANCE
< 30	± 1
> 30 to 120	± 1,5
> 120 to 400	± 2,5
> 400 to 1000	± 4
> 1000 to 4000	± 6
> 4000	± 8
Break sharp angles 0,5 to 2	



DESCRIPTION			
CamSafe CS2 1F+PF STD Scope			
PROJECT	LAST REVISION	WEIGHT	
-	19.08.2021	-	
DRAWING REF.	SHEET	SIZE	SCALE
5349-0000-102	1/1	A3	1:20